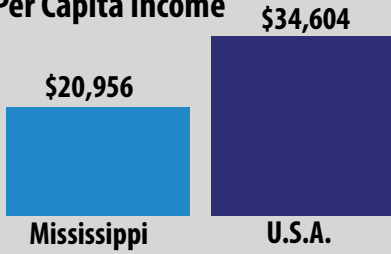


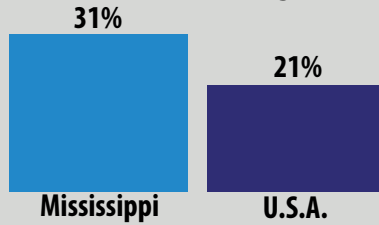
Mississippi State Data (2014-2015)



Per Capita Income



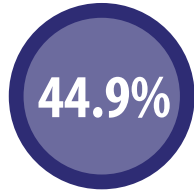
Percent of Kids Living in Poverty



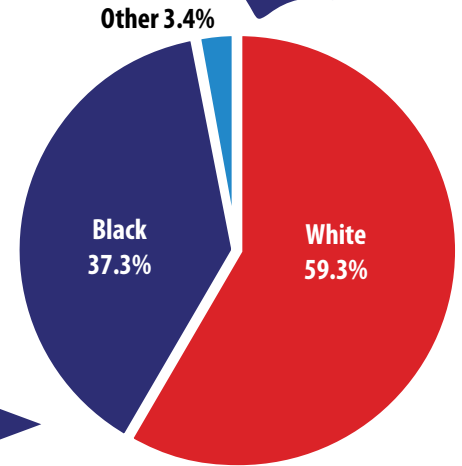
Per Capita Income in Mississippi



Percent of Kids Living in Single-Parent Households in Mississippi

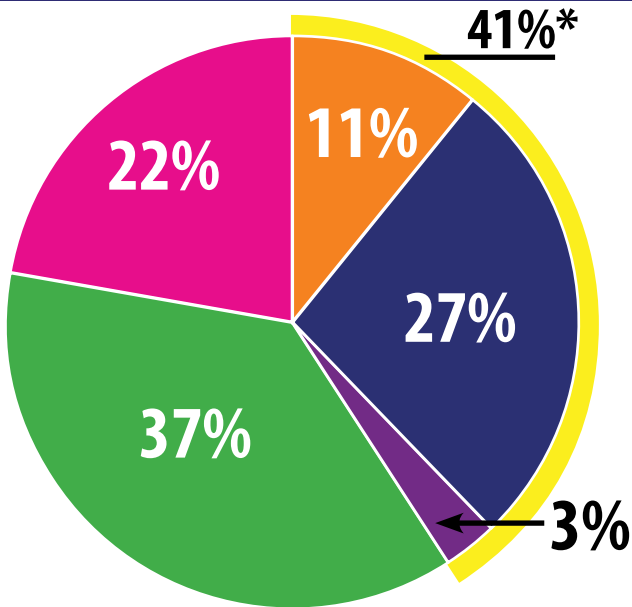


Percent of Kids Living in Poverty in Mississippi



Racial Breakdown of Mississippi

Licensed Early Childhood Program Access for 4-Year-Olds in Mississippi



Estimated # of 4-Year-Olds: 40,260

Total Early Childhood Program Seats: 31,450

- % of Public Pre-K Seats
- % of Seats in District(s)
- % of Seats in Head Start
- % of Seats in Licensed Childcare
- % of 4-Year-Olds without Access to a Licensed Early Childhood Program
- % Blended District & Head Start Seats

School Districts in Mississippi: 144
 # Head Start Partners: 15
 Total # of Licensed Childcare Centers Serving 4-Year-Olds: 1,039

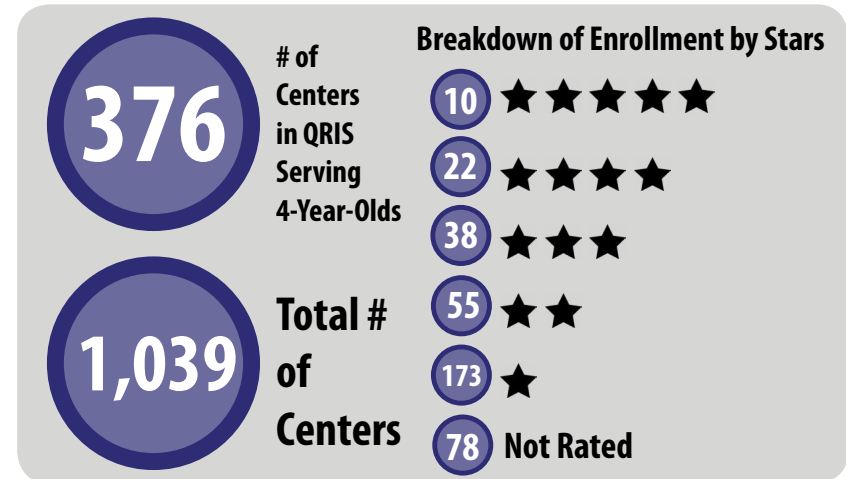
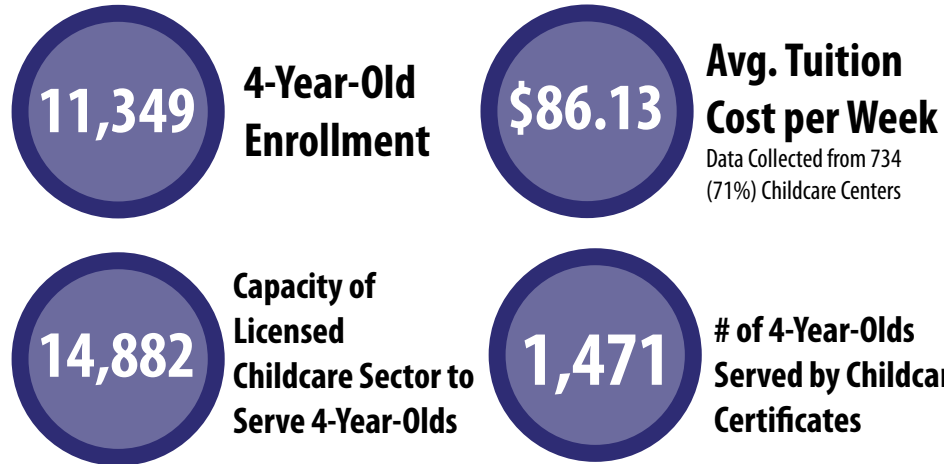
State-Funded Early Learning Collaboratives in Mississippi in 2014-2015: 11

*The percentage of public pre-K seats includes 289 public licensed childcare seats in state-funded early learning collaboratives as well as 372 special education-only seats.

These numbers reflect the capacity of programs (available seats), not enrollment.



The State of Licensed Childcare in Mississippi



The State of Mississippi Head Start (2014-2015)

Total Head Start Funding for 4-Year-Olds:* \$80,681,210.40
of 4-Year-Olds Served in Head Start: 10,943

of Head Start Grantees



Expenditure per Pupil**



of Classes Operated



* This figure is an estimate. It was calculated by dividing the total amount of federal funds the state received for Head Start by the total cumulative Head Start enrollment included in the Office of Head Start Programs Information Report and multiplying by the number of 4-year-olds served, according to the data we collected directly from the Head Start program.

**This figure is an estimate. It was calculated by dividing the total amount of federal funds the state received for Head Start by the total cumulative Head Start enrollment included in the Office of Head Start Program Information Report.

The State of Public Pre-K Education in Mississippi (2014-2015)

of School Districts



Instructional Expenditure per Pupil

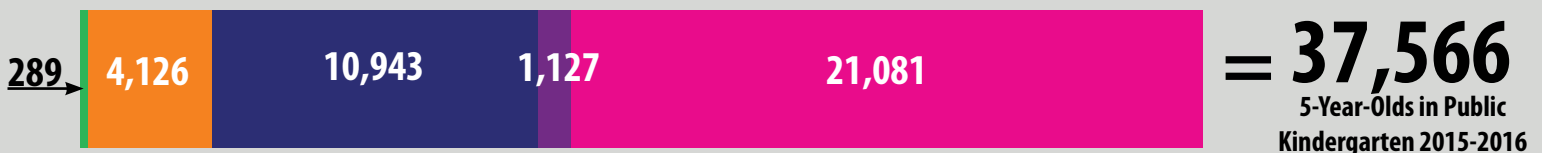


% of Students Receiving Free/Reduced Lunch



57% of Kindergarteners in the state did not have access to public pre-K.

2015-2016 Access to Full-Year, Regular Education Pre-K



- Total # of District Seats
- Total # of Children Who Transitioned to District from Head Start
- Total # of Blended District & Head Start Seats
- Total # of Kindergarteners in State with No Access to Public Pre-K
- Total # of Kindergarteners in District Served in Public Licensed Childcare

Pre-K District Data

Total # of Students Served in the Classroom: 4,498
 Avg. Cost per Child: \$4,460.33
 Total Expenditure: \$20,561,447.69
 # of Districts Offering Pre-K Full-Year, Classroom-Based, Regular Education Pre-K: 75

Quality Benchmarks for Full-Year, Regular Education Programs

NIEER STANDARDS	QUALITY BENCHMARKS	DISTRICT DATA
Early learning standards used	Comprehensive	72 of 72 Surveyed Districts
Teacher qualifications:		
-Degree	Bachelor's Degree	69 of 72 Surveyed Districts
-Specialization	Early Childhood Education	32 of 72 Surveyed Districts
Assistant teacher degree	CDA or equivalent	18 of 72 Surveyed Districts
Teacher in-service	15 hrs/yr	49 of 72 Surveyed Districts
Max class size	20 or lower	67 of 72 Surveyed Districts
Staff:child ratio	1:10	66 of 72 Surveyed Districts
Screenings/referral and support services	Vision, Health, Support Services	43 of 72 Surveyed Districts
Meals	At least 1 per day	72 of 72 Surveyed Districts
Monitoring	Site visits	68 of 72 Surveyed Districts

* In 2014-2015, there were 144 school districts. As of the 2015-2016 school year, there are 142.